



UL Verification Services Inc.
7036 Snowdrift Road
Allentown, PA 18106
610-774-1300



Indoor Distribution Test Report

Relevant Standards
IES LM-79-2008, ANSI C82.77-10-2014

Prepared For
H E Williams Inc
831 W Fairview Ave
PO Box 837
Carthage, MO 64836-0837
United States

Catalog Number
2AS-L12/835-DIM-UNV-LM-OF-WH-x-xx (0° TILT)
Order Number
13257190
Test Number
13257190.33

Test Date

2020-03-20

Prepared By

Jesse Litchfield, Technician

Approved By

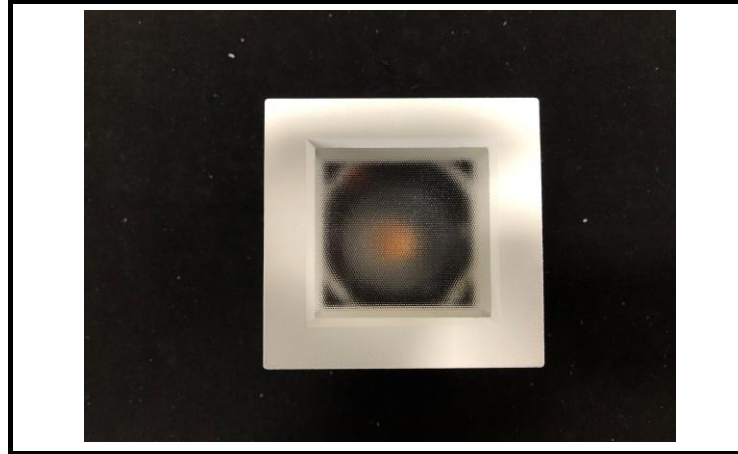
Alexa Lambert, Project Handler

The results contained in this report pertain only to the tested sample.
This report shall not be reproduced, except in full, without written approval of Underwriters Laboratories.
This report must not be used by the client to claim product certification, approval, or endorsement by
NVLAP, NIST, or any agency of the Federal Government.



Luminaire Description: Aluminum housing, optics, and trim enclosure
Lamp: One white LED
Mounting: Recessed
Ballast/Driver: One Philips Advance XI025C070V054DSM1 Driver

Luminaire



Luminaire Characteristics

Luminous Length: 2.50 in.
Luminous Width: 2.500 in.

Summary of Results

Total Luminaire Output: 955.1 Lumens
Luminaire Efficacy: 44.9 lm/w
Maximum Candela: 6743 Candela

Test Conditions

Test Temperature: 24.5 °C
Voltage: 120.0 VAC
Current: 0.1782 A
Power: 21.29 W
Power Factor: 0.995
Frequency: 60 Hz
Current THD: 8.69 %

Laboratory results may not be representative of field performance
Ballast factors have not been applied



Distribution - Goniophotometer

Distribution Test Conditions

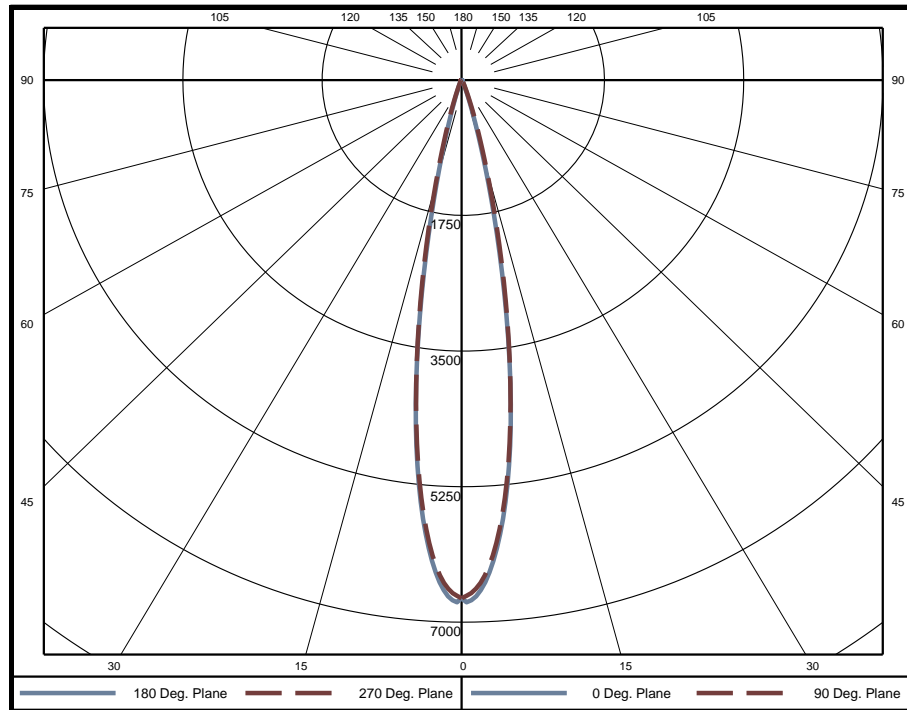
Temperature	Voltage	Current	Power	Power Factor	Frequency	Current THD
24.5 °C	120.0 VAC	0.1782 A	21.29 W	0.995	60 Hz	8.69 %

Summary of Results

Spacing Criteria
 0-180: 0.33
 90-270: 0.33

Total Lumen Output: 955.1 Lumens
Luminaire Efficacy: 44.9 lm/w
Maximum Candela: 6743 Candela

Polar Plot



Zonal Lumen Summary

Zone	Lumens	% of Luminaire	Zone	Lumens	% of Luminaire	Zone	Lumens	% of Luminaire
0-5	147.5	15.4%	60-65	8.1	0.8%	120-125	0	0.0%
5-10	314.6	32.9%	65-70	7.1	0.7%	125-130	0	0.0%
10-15	247.4	25.9%	70-75	5.7	0.6%	130-135	0	0.0%
15-20	109.6	11.5%	75-80	3.9	0.4%	135-140	0	0.0%
20-25	39.8	4.2%	80-85	2.0	0.2%	140-145	0	0.0%
25-30	17.4	1.8%	85-90	0.4	0.0%	145-150	0	0.0%
30-35	10.4	1.1%	90-95	0	0.0%	150-155	0	0.0%
35-40	8.5	0.9%	95-100	0	0.0%	155-160	0	0.0%
40-45	7.9	0.8%	100-105	0	0.0%	160-165	0	0.0%
45-50	8.0	0.8%	105-110	0	0.0%	165-170	0	0.0%
50-55	8.3	0.9%	110-115	0	0.0%	170-175	0	0.0%
55-60	8.5	0.9%	115-120	0	0.0%	175-180	0	0.0%

Zone	Lumens	% of Luminaire
0-40	895	93.7%
0-60	928	97.2%
0-90	955	100.0%
90-180	0	0.0%



Candela Tabulation

Horizontal Angle (Degrees)

Vertical Angle (Degrees)	0	22.5	45	67.5	90	112.5	135	157.5	180	202.5	225	247.5	270	292.5	315	337.5
	0	6691	6691	6691	6691	6691	6691	6691	6691	6691	6691	6691	6691	6691	6691	6691
	5	5686	5639	5657	5643	5626	5643	5657	5639	5686	5639	5657	5643	5626	5643	5657
	10	3088	3260	3453	3317	3170	3317	3453	3260	3088	3260	3453	3317	3170	3317	3453
	15	895	1133	1442	1260	1067	1260	1442	1133	895	1133	1442	1260	1067	1260	1442
	20	198	286	464	362	273	362	464	286	198	286	464	362	273	362	464
	25	69	86	150	109	88	109	150	86	69	86	150	109	88	109	150
	30	36	39	55	49	44	49	55	39	36	39	55	49	44	49	55
	35	26	27	30	31	30	31	30	27	26	27	30	31	30	31	30
	40	21	22	23	24	23	24	23	22	21	22	23	24	23	24	23
	45	19	20	21	21	21	21	21	20	19	20	21	21	21	21	20
	50	19	19	19	20	20	20	19	19	19	19	20	20	20	19	19
	55	19	19	19	19	19	19	19	19	19	19	19	19	19	19	19
	60	18	18	17	18	18	18	17	18	18	17	18	18	18	17	18
	65	16	16	15	16	16	16	15	16	16	15	16	16	16	15	16
	70	13	13	12	13	13	13	12	13	13	12	13	13	13	12	13
	75	9	9	9	9	9	9	9	9	9	9	9	9	9	9	9
	80	6	6	5	6	6	6	5	6	6	5	6	6	6	5	6
	85	2	2	2	2	2	2	2	2	2	2	2	2	2	2	2
	90	0	0	0	0	0	0	0	0	0	0	0	0	0	0	0
	95	0	0	0	0	0	0	0	0	0	0	0	0	0	0	0
	100	0	0	0	0	0	0	0	0	0	0	0	0	0	0	0
	105	0	0	0	0	0	0	0	0	0	0	0	0	0	0	0
	110	0	0	0	0	0	0	0	0	0	0	0	0	0	0	0
	115	0	0	0	0	0	0	0	0	0	0	0	0	0	0	0
	120	0	0	0	0	0	0	0	0	0	0	0	0	0	0	0
	125	0	0	0	0	0	0	0	0	0	0	0	0	0	0	0
	130	0	0	0	0	0	0	0	0	0	0	0	0	0	0	0
	135	0	0	0	0	0	0	0	0	0	0	0	0	0	0	0
	140	0	0	0	0	0	0	0	0	0	0	0	0	0	0	0
	145	0	0	0	0	0	0	0	0	0	0	0	0	0	0	0
	150	0	0	0	0	0	0	0	0	0	0	0	0	0	0	0
	155	0	0	0	0	0	0	0	0	0	0	0	0	0	0	0
	160	0	0	0	0	0	0	0	0	0	0	0	0	0	0	0
	165	0	0	0	0	0	0	0	0	0	0	0	0	0	0	0
	170	0	0	0	0	0	0	0	0	0	0	0	0	0	0	0
	175	0	0	0	0	0	0	0	0	0	0	0	0	0	0	0
	180	0	0	0	0	0	0	0	0	0	0	0	0	0	0	0

Average Luminance (cd/m²)

Horizontal Angle (Degrees)

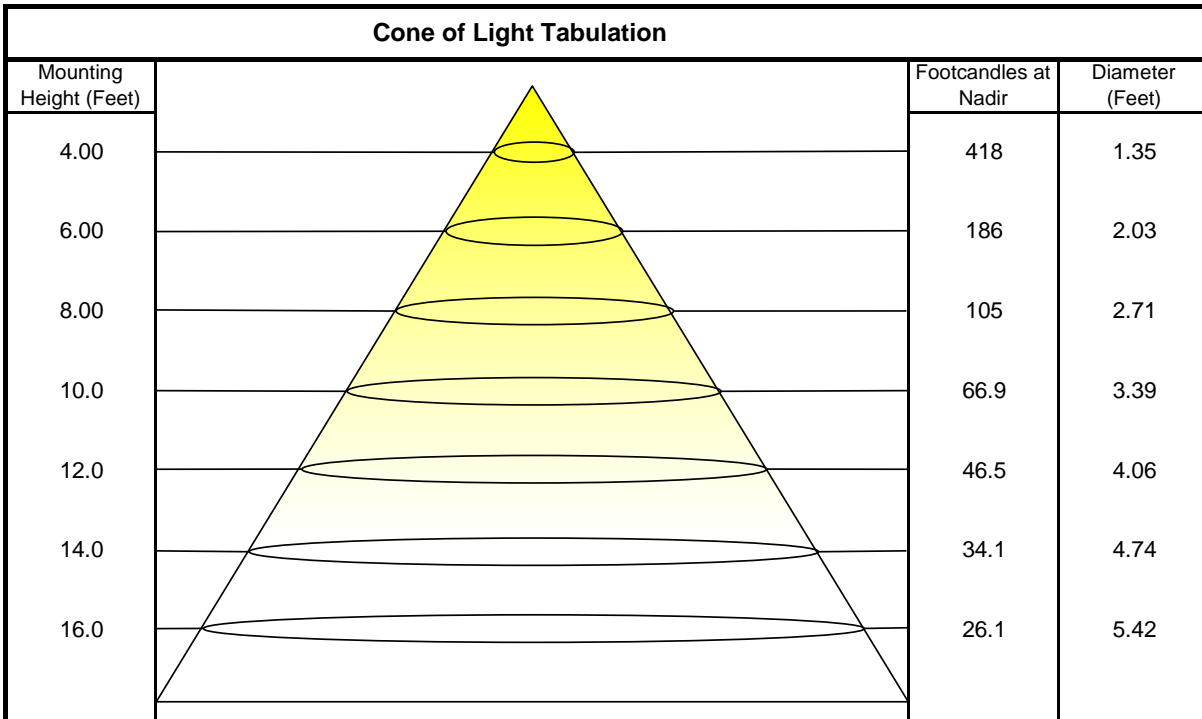
Vertical Angle (Degrees)	0	45	90
	0	1659000	1659000
	45	6707	7241
	55	8068	8066
	65	9096	8841
	75	8961	8395
	85	6596	5042



Coefficients of Utilization - Zonal Cavity Method

Effective Floor Cavity Reflectance 20%																		
Ceiling Cavity Reflectance	80				70				50			30			10			0
Wall Reflectance	70	50	30	10	70	50	30	10	50	30	10	50	30	10	50	30	10	0
Room Cavity Ratio (RCR)	** Values are expressed as percent of total lumen output delivered to the task surface **																	
0	119	119	119	119	116	116	116	116	111	111	111	106	106	106	102	102	102	100
1	115	113	111	109	112	111	109	107	107	105	104	103	102	101	100	99	98	96
2	111	107	104	102	109	106	103	101	103	100	98	100	98	96	97	96	94	93
3	108	103	99	96	106	102	98	96	99	96	94	97	95	93	95	93	91	90
4	105	99	95	92	103	98	95	92	96	93	91	94	92	90	93	91	89	88
5	102	96	92	89	100	95	92	89	94	90	88	92	89	87	91	88	87	85
6	99	93	89	86	98	93	89	86	91	88	86	90	87	85	89	86	85	84
7	97	91	87	84	96	90	87	84	89	86	83	88	85	83	87	85	83	82
8	95	89	85	82	94	88	84	82	87	84	82	86	83	81	86	83	81	80
9	93	87	83	80	92	86	83	80	85	82	80	85	82	80	84	81	79	79
10	91	85	81	79	90	84	81	79	84	81	78	83	80	78	83	80	78	77

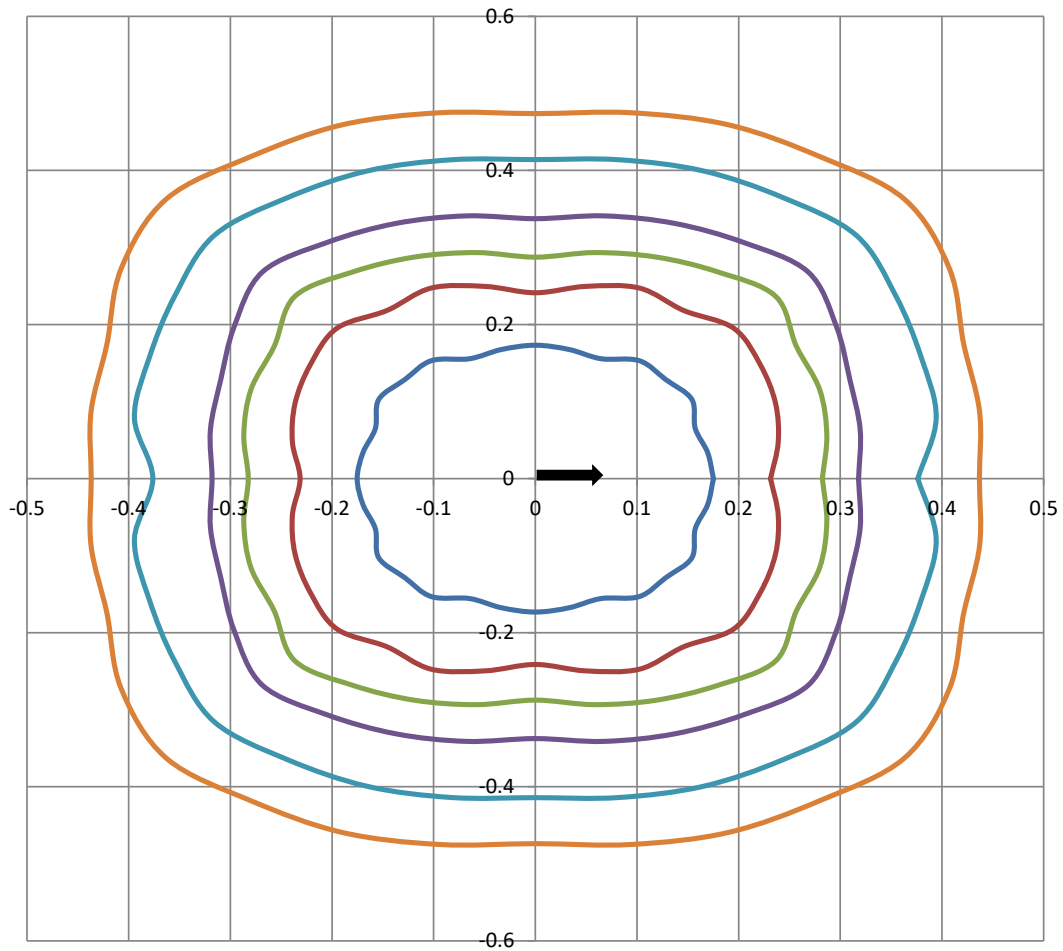
Beam and Field Information	
CIE Type:	Direct
Center Beam Intensity:	6691 Candela
Central Cone Intensity:	6320 Candela
Beam Flux:	456.4 Lumens
Beam Angle (0-180):	19.1 Degrees
Beam Angle (90-270):	19.3 Degrees
Field Angle (0-180):	31.9 Degrees
Field Angle (90-270):	33.5 Degrees





ISOFootcandle Plot

Mounting Height - 8 Feet



Grid Lines in Units of Mounting Height

50 fc 20 fc 10 fc 5 fc 2 fc 1 fc